

el. 11,245'

el. 8,540'

PALMER LIFT IS ONLY OPEN WHEN CONDITIONS PERMIT (TYPICALLY SPRING/SUMMER)

## TRAIL MARKINGS

- BEGINNER
- INTERMEDIATE
- ◆ ADVANCED
- FREESTYLE TERRAIN
  - S=SMALL FEATURES
  - M=MEDIUM FEATURES
  - L=LARGE FEATURES
  - BONE ZONE=TERRAIN GULLY
- UPHILL TRAVEL ROUTE
- NIGHT SKIING
- SLOW SKIING ZONE
- AREA BOUNDARY

## CHAIR LIFTS

- QUAD EXPRESS
- BRUNO'S CHAIR LIFT

## FACILITIES

- A WY'EAST DAY LODGE
- ⊕ SKI PATROL
- B SILCOX HUT
- C LODGE GUEST PARKING
- D PARKING
- E SNOWSHOE TRAIL START

Degree of difficulty ratings and symbols are relative to Timberline Ski Area only. FOR YOUR SAFETY, PLEASE OBEY ALL ON-HILL SIGNS.

### BOUNDARY POLICY

Timberline does not recommend out of bounds skiing or snowboarding. If you choose to leave the ski area boundary, you assume the risks of backcountry travel.

You must be prepared with the knowledge and proper equipment to navigate unmarked hazards, extreme avalanche danger, blow holes, rocks, cliffs, crevasses, tree wells, low visibility, limited access, limited return and all other hazards.

Be aware that all canyons lead away from the ski area, return may not be possible.

Once you are outside the ski area boundary you are responsible for your own safety, transportation and evacuation. Help, if possible may be hours or days away. You or your heirs will be responsible for the cost of your rescue.

### NO SLEDDING

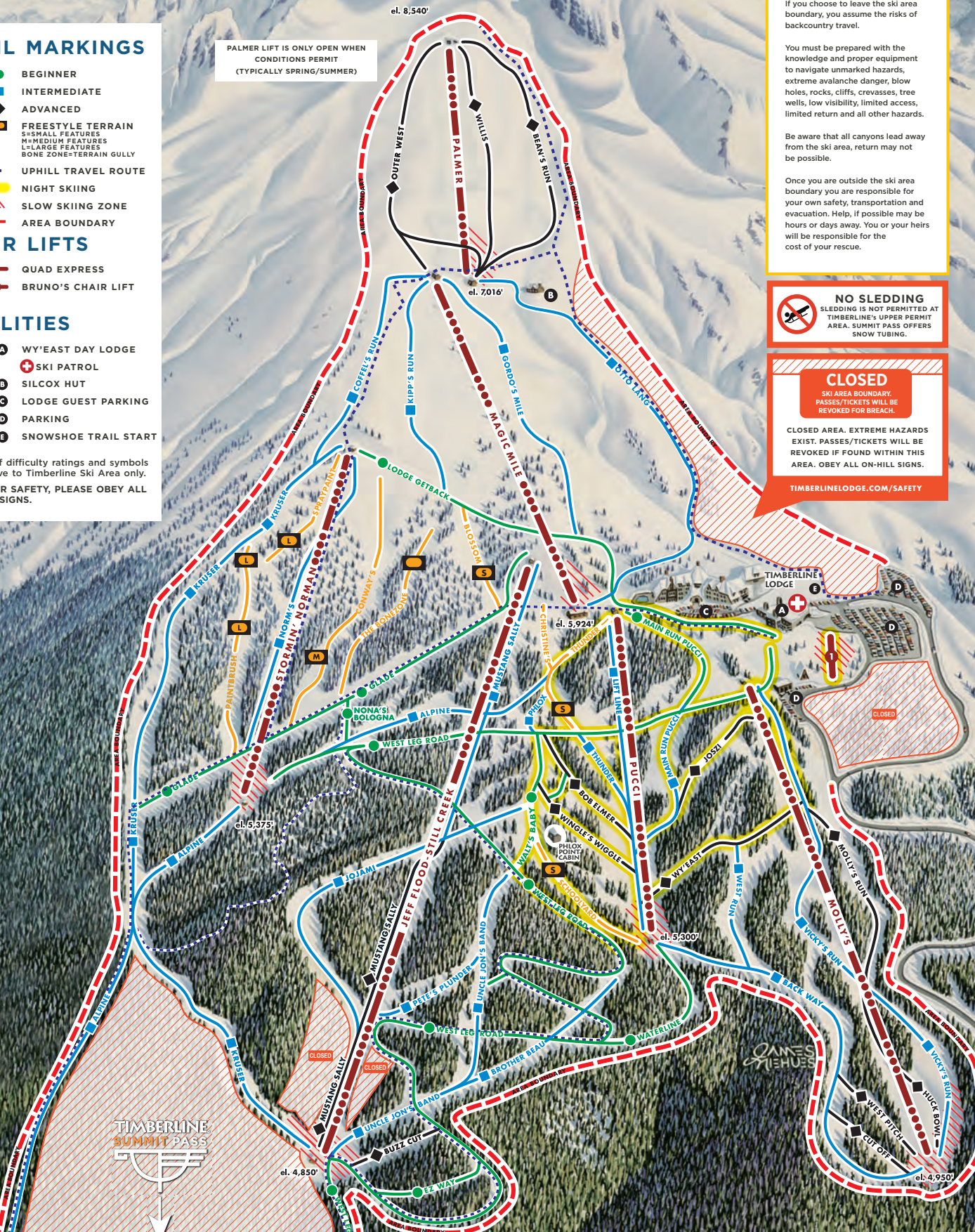
SLEDDING IS NOT PERMITTED AT TIMBERLINE'S UPPER PERMIT AREA. SUMMIT PASS OFFERS SNOW TUBING.

### CLOSED

SKI AREA BOUNDARY. PASSES/TICKETS WILL BE REVOKED FOR BREACH.

CLOSED AREA. EXTREME HAZARDS EXIST. PASSES/TICKETS WILL BE REVOKED IF FOUND WITHIN THIS AREA. OBEY ALL ON-HILL SIGNS.

[TIMBERLINELODGE.COM/SAFETY](http://TIMBERLINELODGE.COM/SAFETY)



TIMBERLINE SUMMIT PASS

JAMES MICHUES

**TRAIL MARKINGS**

- BEGINNER
- INTERMEDIATE
- ▨ SNOW TUBING
- - - UPHILL TRAVEL ROUTE
- ▨ SLOW SKI ZONE
- - - AREA BOUNDARY

**CHAIR LIFT**

- - - DOUBLE CHAIR LIFT

**FACILITIES**

- A SUMMIT PASS LODGE
- + SKI PATROL
- B SHUTTLE & PARKING
- C REST AREA
- D TIMBERLINE ROAD

Degree of difficulty ratings and symbols are relative to Timberline Ski Area only.

FOR YOUR SAFETY, PLEASE OBEY ALL ON-HILL SIGNS.

